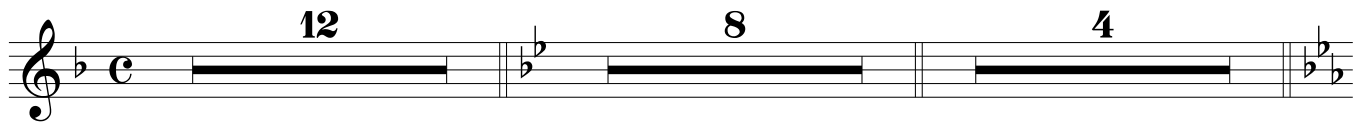


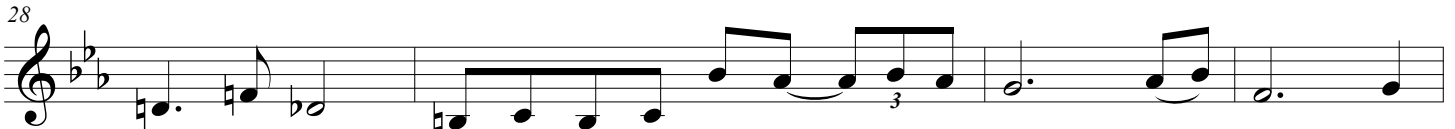
VOCAL  
(OPTIONAL)

# SERENADE IN BLUE

Harry Warren & Mack Gordon  
Arr. by Bill Holcombe



When I hear that ser - e - nade in blue, I'm some-where in an - oth - er world a -  
Once a - gain your face comes back to me, just like the theme of some for - got - ten



lone with you shar - ing all the joys we used to know ma - ny moons a  
mel - o - dy, In the al - bum of my mem - o - ry, Ser - e - nade In



go. Blue. It seems like on - ly yes - ter - day, a small ca - fe, a crow - ded floor and



as we dance the night a - way, I hear you say for - ev - er more, and then the song be - came a sign, for -



ev - er more be - came good - bye, but you re - mained in my heart So



tell me dar - ling is there still a spark, or on - ly lone - ly ash - es of the flame we knew,



should I go on whist - ling in the dark? Ser - e - nade In Blue.